



**Task Title: Follow a Flow Chart**

OALCF Cover Sheet – Practitioner Copy

**Learner Name:** \_\_\_\_\_

**Date Started:** \_\_\_\_\_

**Date Completed:** \_\_\_\_\_

**Successful Completion:** Yes  No

**Goal Path:** Employment  Apprenticeship

Secondary School  Post Secondary  Independence

**Task Description:** Use a flowchart to follow the process of an Amazon book order.

**Main Competency/Task Group/Level Indicator:**

- Find and Use Information/Interpret documents/A2.3

**Materials Required:**

- Pen/pencil and paper and/or digital device

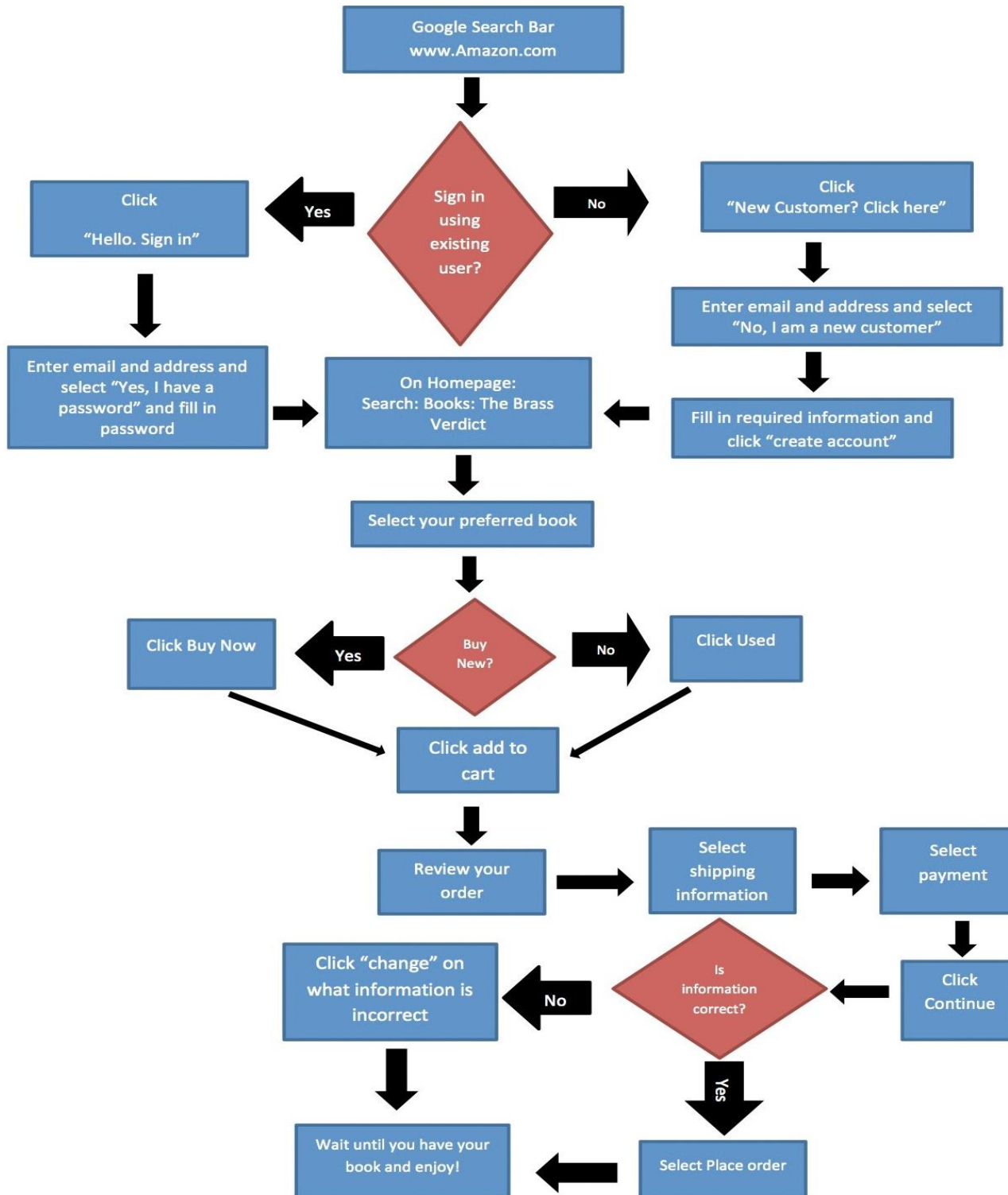
Task Title: FollowAFlowChart\_EI\_A2.3

## Learner Information

Flow charts are often used by companies to help their customers understand the steps in a process that might be difficult to follow.

Scan the “**Amazon Book Order Process**”.

# Amazon Book order Process



Work Sheet

**Task 1: What will you click if you are not an existing Amazon user?**

Answer:

---

**Task 2: What search criteria will you use when searching for a book?**

Answer:

---

**Task 3: Which choice do you need to make directly after you have selected your preferred book?**

Answer:

---

**Task 4: What will you click if you notice your address information is incorrect after selecting payment?**

Answer:

---

## Answers

### **Task 1: What will you click if you are not an existing Amazon user?**

Answer: New Customer

1. Follow flowchart to "Sign in using existing user?"
2. "No"
3. Click "New Customer? Click here"

### **Task 2: What search criteria will you use when searching for a book?**

Answer: Follow flowchart to "On Homepage: Search: Books: The Brass Verdict"

### **Task 3: Which choice do you need to make directly after you have selected your preferred book?**

Answer: New or Used

1. Follow flowchart to "Select your preferred book"
2. "Buy New?"
3. "Yes" or "No"
4. Choose New (buy now) or Used

### **Task 4: What will you click if you notice your address information is incorrect after selecting payment?**

Answer: Click "change" on address information

1. Follow flowchart to "Select payment"
2. "Click Continue"
3. "Is information correct?"
4. "No"
5. Click "change" on the what the information is incorrect

### Performance Descriptors

Levels	Performance Descriptors	Needs Work	Completes task with support from practitioner	Completes task independently
A2.3	manages unfamiliar elements (e.g. vocabulary, context, topic) to complete tasks			
	integrates several pieces of information from documents			
	uses layout to locate information			
	identifies the purpose and relevance of documents			
	makes inferences and draws conclusions from information displays			

This task: Was successfully completed  Needs to be tried again

Learner Comments:

Task Title: FollowAFlowChart\_EI\_A2.3

Instructor (print):

---

Learner (print):

---