



Task Title: Use a Floorplan to Design a Room

OALCF Cover Sheet – Practitioner Copy

Learner Name: _____

Date Started: _____

Date Completed: _____

Successful Completion: Yes ☐ No ☐

Goal Path: Employment ☐ Apprenticeship ☐

Secondary School ☐ Post Secondary ☐ Independence ☐

Task Description: The learner will create a floor plan using furniture and room measurements.

Main Competency/Task Group/Level Indicator:

- Find and Use Information/Interpret documents/A2.2
- Understand and Use Numbers/Use measures/C3.1

Materials Required:

- Pen/pencil and paper and/or digital device
- Calculator or digital device with calculator function (optional)

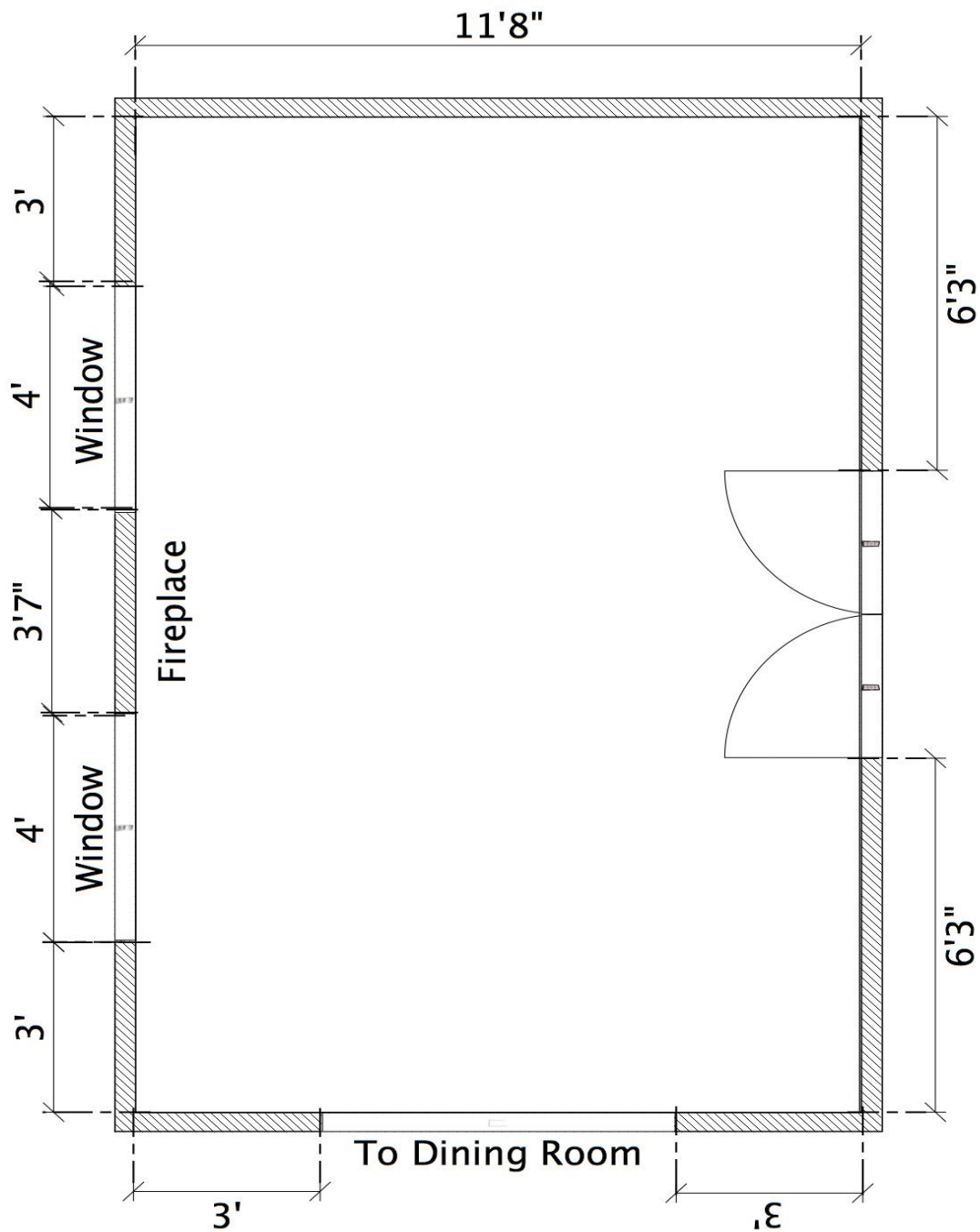
Task Title: UseFloorplanToDesignRoom_I_A2.2_C3.1

Learner Information

A floorplan can help you decide where to put furniture so that everything will fit.

Scan the “floorplan” and “furniture items and dimensions”.

Floorplan



Furniture Items and Dimensions

Item	Dimensions
Couch	6 feet x 3 feet
Loveseat	4 feet x 3 feet
Chair	3 feet x 3 feet
End table	2 feet x 2 feet
Coffee table	3 feet by 2 feet
Television stand	3 feet x 2 feet
Bookshelf	2 feet wide x 1 foot deep
Floor lamp	All floor lamps have a 1-foot diameter base
Dog bed	2 feet x 2 feet
Plants	All plants have a 1-foot diameter base

Task Title: UseFloorplanToDesignRoom_I_A2.2_C3.1

Work Sheet

Task 1: Select five (5) items from the furniture list. Draw and label where you would like to put each item on the floorplan. Make sure there is at least 1 foot of empty space along each wall. Make sure furniture is not blocking windows or doorways.

Answer: No written response required here.

Task completed: Yes: ☐

Task Title: UseFloorplanToDesignRoom_I_A2.2_C3.1

Answers

Answers will vary.

Performance Descriptors

Levels	Performance Descriptors	Needs Work	Completes task with support from practitioner	Completes task independently
A2.2	extracts information from tables and forms			
	uses layout to locate information			
	makes connections between parts of documents			
C3.1	adds and subtracts whole number measurements			
	recognizes values in number and word format			
	recognizes simple, common shapes (e.g. circle, square, rectangle, triangle)			
	measure distance, length, width, height, weight, liquid volume, angles and temperature			
	makes simple estimates			
	interprets and represents measures using symbols and abbreviations (e.g. inches as ", centimeters as cm, pounds as lbs, kilograms as kilos or kg)			

This task: Was successfully completed ☐ Needs to be tried again ☐

Task Title: UseFloorplanToDesignRoom_I_A2.2_C3.1

Learner Comments:

Instructor (print):

Learner (print):