

Task Title: Interpret and Create Drawings

OALCF Cover Sheet – Practitioner Copy

Learner Name: _____

Date Started: _____

Date Completed: _____

Successful Completion: Yes No

Goal Path: Employment Apprenticeship

Secondary School Post Secondary Independence

Task Description: The learner will use a Legend to interpret electrical features on a blueprint, and to determine materials needed for a job.

Main Competency/Task Group/Level Indicator:

- Find and Use Information/Interpret documents/A2.3
- Communicate Ideas and Information/Complete and create documents/B3.2a
- Understand and Use Numbers/Manage data/C4.1

Materials Required:

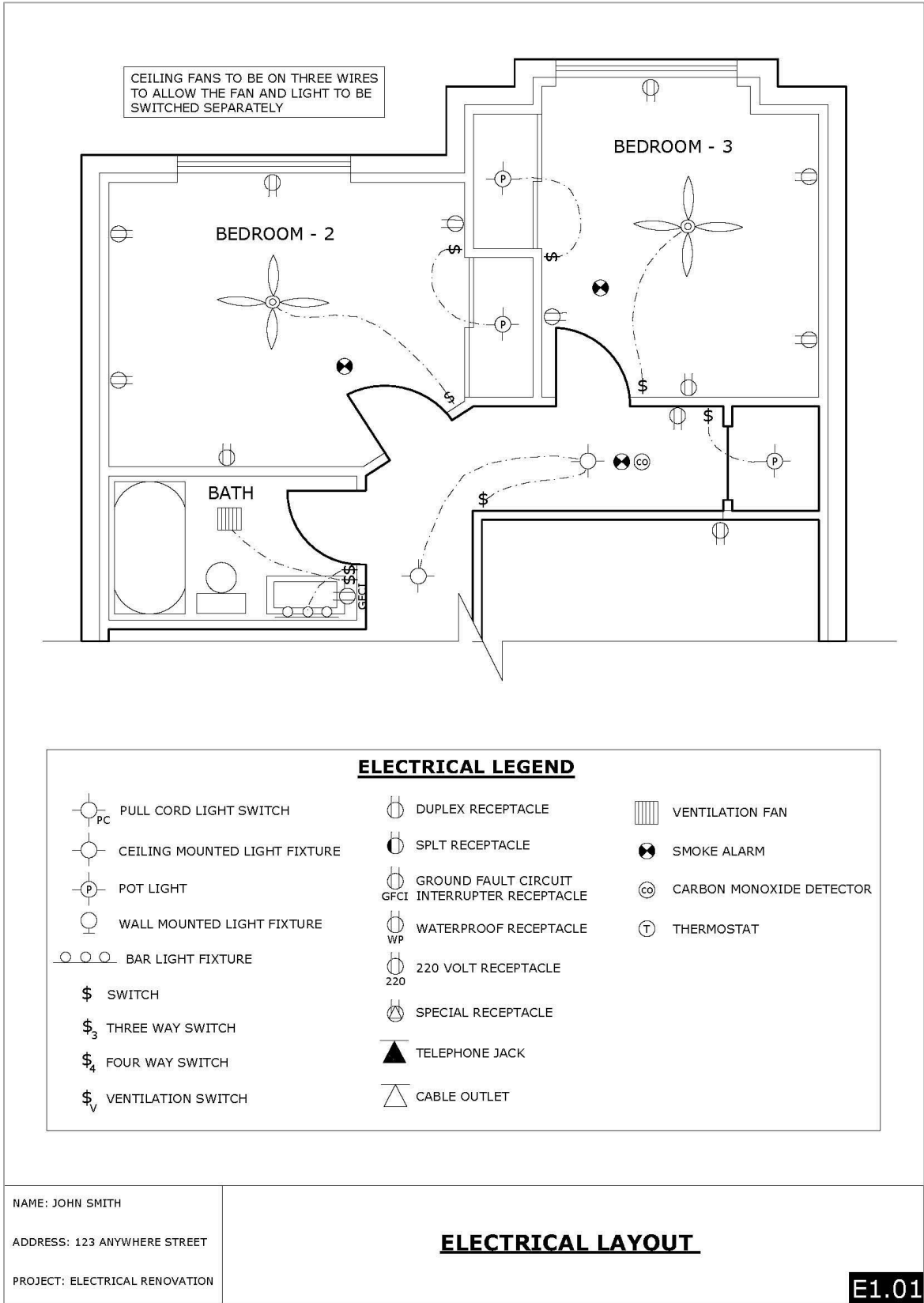
- Pen/pencil and paper

Learner Information

Electricians interpret, modify and create schematic drawings using standardized icons and legends. They use the drawing to plan tasks and determine materials needed for a job.

Scan the “Blueprint and Electrical Legend”, “Electrical Supplies Order Form” and “Schematic Drawing (Bedroom 1)”.

Blueprint and Electrical Legend



Electrical Supplies Order Form	
Item	No. Requested
Pull cord light switch	
Ceiling mounted light fixture	
Pot light	
Bar light fixture	
Switch	
Three-way switch	
Ventilation fan switch	
Duplex receptacle	
Split receptacle	
Ground fault circuit interrupter (GFCI)	
Waterproof receptacle	
220v receptacle	
Phone jack	
Cable outlet	
Ventilation fan	
Interconnected smoke alarm	
Carbon Monoxide detector	
Thermostat/circulation fan	
Other	

Schematic Drawing (Bedroom 1)



Work Sheet

Task 1: Interpret the Blueprint and Electrical Legend to complete the following tasks.

a) How many switches are required for bedroom #2?

Answer:

b) What is the electrical apparatus over the sink?

Answer:

Task 2: The electrician orders supplies. Use the Blueprint and Electrical Legend to decide what electrical supplies are needed for the Bathroom and 2 Bedrooms.

Complete the Electrical Supplies Order Form.

Answer: No written response required here.

Task Completed: Yes

Task 3: Refer to the icons of the Electrical Legend to draw the electrical apparatuses, as per the directions below, on the Schematic Drawing (Bedroom 1).

- a) Switch for overhead light on west wall near door**
- b) Overhead light centered in room**
- c) Pull cord light switch in closet centered between sliding doors**
- d) 2 duplex receptacles on each of the south and east walls**
- e) 1 duplex receptacle on the north wall**

Answer: No written response required here.

Task Completed: Yes

Answers

Task 1: Interpret the Blueprint and Electrical Legend to complete the following tasks.

a) How many switches are required for bedroom #2?

Answer: two switches

b) What is the electrical apparatus over the sink?

Answer: Bar Light Fixture

Task 2: The electrician orders supplies. Use the Blueprint and Electrical Legend to decide what electrical supplies are needed for the Bathroom and 2 Bedrooms. Complete the Electrical Supplies Order Form.

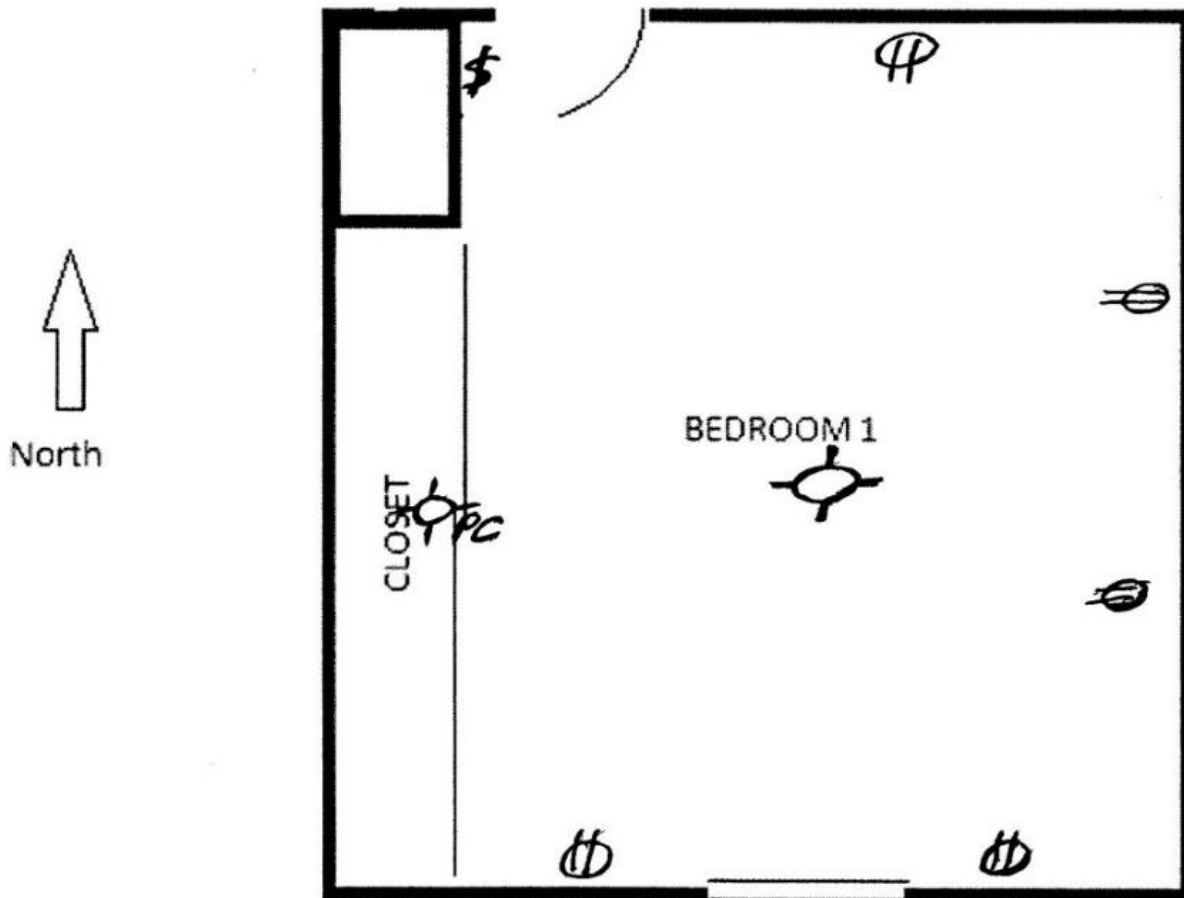
Answer:

Electrical Supplies Order Form	
Item	No. Requested
Pull cord light switch	
Ceiling mounted light fixture	
Pot light	2
Bar light fixture	1
Switch	6
Three-way switch	
Ventilation fan switch	
Duplex receptacle	11
Split receptacle	
Ground fault circuit interrupter (GFCI)	1
Waterproof receptacle	
220v receptacle	
Phone jack	
Cable outlet	
Ventilation fan	1
Interconnected smoke alarm	2
Carbon Monoxide detector	
Thermostat/circulation fan	
Other	

Task 3: Refer to the icons of the Electrical Legend to draw the electrical apparatuses, as per the directions below, on the Schematic Drawing (Bedroom 1).

Switch for overhead light on west wall near door

- a) Overhead light centered in room
- b) Pull cord light switch in closet centered between sliding doors
- c) 2 duplex receptacles on each of the south and east walls
- d) 1 duplex receptacle on the north wall



Performance Descriptors

Levels	Performance Descriptors	Needs Work	Completes task with support from practitioner	Completes task independently
A2.3	Performs complex searches using multiple search criteria			
	Integrates several pieces of information from documents			
	Compares or contrasts information between two or more documents			
	Uses layout to locate information			
B3.2a	Uses layout to determine where to make entries			
	Follows instructions on documents			
C4.1	Identifies and compares quantities of items			

This task: Was successfully completed Needs to be tried again

Task Title: InterpretandCreateDrawings_EA_A2.3_B3.2a_C4.1

Learner Comments:

Instructor (print):

Learner (print):
